

# PLAYER ADVANCE SHEET

## Pinnacle Bank Championship Presented by Woodhouse

### CONTACTS

The Club at Indian Creek / 3825 N 202<sup>nd</sup> St. / Elkhorn, NE 68022 / (402) 289-0900

Tournament Director: Jessica Brabec (515) 418-0175

Advance Rules Official: Colin Murray (704) 770-5252

Player Relations: Brad McGahey (904) 495-5785 / Cooper Barnes (205) 907-6234

Caddie Master: Bob Plath (402) 676-2429

### HOURS OF OPERATION

DATE	DAY	PLAYER & CADDIE REGISTRATION	PLAYER & CADDIE BREAKFAST	PLAYER & CADDIE LUNCH	RANGE	PHYSICAL THERAPY	EQUIPMENT TRAILER	COMMON GROUNDS / FITNESS CENTER
8/4	Mon	7:00 AM – 5:00 PM	6:30 AM – 9:30 AM	10:30 AM – 2:30 PM	7:00 AM – 7:30 PM	Setup Day	8:00 AM – 5:00 PM	5:00 AM – 9 PM
8/5	Tue	7:00 AM - 5:00 PM	6:00 AM – 9:30 AM	10:30 AM - 2:30 PM	6:00 AM – 7:30 PM	7:00 AM – 3:00 PM	8:00 AM – 5:00 PM	5:00 AM - 9 PM
8/6	Wed	7:00 AM - 12:00 PM	5:15 AM – 9:30 AM	10:30AM - 2:30 PM	5:15 AM – 7:30 PM	7:00 AM – 3:00 PM	8:00 AM – 2:30 PM	5:00 AM - 9 PM
8/7	Thu	N/A	5:15 AM – 9:30 AM	10:30 AM - 3:00 PM	5:15 AM – 8:00 PM	1.5 hours prior to first time – 3:00 PM	N/A	5:00 AM - 9 PM
8/8	Fri	N/A	5:15 AM – 9:30 AM	10:30 AM - 3:00 PM	5:15 AM – 8:00 PM	1.5 hours prior to first time – 3:00 PM	N/A	5:00 AM - 9 PM
8/9	Sat	N/A	1.5 hours before 1 <sup>st</sup> tee time – 10:00 AM	10:30 AM - 3:00 PM	5:30 AM – 7:00 PM	1.5 hours prior to first time – 3:00 PM	N/A	7:00 AM – 8 PM
8/10	Sun	N/A	1.5 hours before 1 <sup>st</sup> tee time – 10:00 AM	10:30 AM – 3:00 PM	5:30 AM – 1 hour after the last tee time.	1.5 hours prior to first time – last tee time	N/A	10:00 AM – 7 PM

\*Please refer to the 'Tournament Week Schedule' below or the Virtual Locker Room on Links for additional details on Practice Area closures.

### NEED TO KNOW

- **PLAYER REGISTRATION** must be completed before practice or play. Registration will be located in the clubhouse adjacent to Player Dining (East Entrance). Please see map below and contact Kim Zillig (402-598-3302) with any questions.
- **CADDIE REGISTRATION** must be completed before practice or play. Registration will be located in Caddie/Volunteer Hospitality Tent on the West end of the parking lot behind the Rules Trailer. Please see map below and contact Bob Plath (402-676-2429) with any questions.

- **MONDAY PRO-AM** There will be a field of approximately 28 teams for the Sandhills Global Pro-Am on Monday, August 4<sup>th</sup>. Tee times will run from approximately 12:00 p.m. – 2:30 p.m. off #1 and #10 tees. Practice rounds are available until the afternoon pro-am begins and are available after the last group in the pro-am has made the turn (approximately 5:30 pm).
- **PLAYER/CADDIE DINING LUNCH** on Monday, August 4<sup>th</sup> will be in the Caddie/Volunteer hospitality tent on the West end of the parking lot close to the practice putting green. There will be **NO** lunch service on Monday in the Player Dining area in the clubhouse.
- **OFFICIAL PRO-AM** The Dormie Network Pro-Am will be 9 & 9 and will take place on Wednesday, August 6<sup>th</sup> with starting times from approximately 6:30 – 8:42 am and 12:10 – 2:22 pm. There will be approximately 46 teams. Nine-hole practice rounds will be available in the morning prior to the first starting time. Practice rounds will not be permitted after the pro-am.
- **PRACTICE ROUNDS** beginning on hole #10 must yield in all instances to players making the turn and must not delay practice rounds at any time. Abuse of the Practice Area Policy may result in disciplinary action.
- **PHYSICAL THERAPY** is located next to Player Dining in the ballroom on the East end of the clubhouse (hours listed above).
- **PLAYER TICKET REQUESTS** will be available at player registration. There is a maximum quantity of four any day clubhouse tickets per player. Clubhouse tickets do not allow access to player areas such as dining.
- **PLAYER PARKING** will be in the clubhouse parking lot. A TOUR issued credential will be required to gain access. You must obtain LOT A parking pass at registration. Use the entrance off 204<sup>th</sup> and Laramie Rd (Please see map below). **PLEASE NOTE PARKING WILL BE EXTREMELY LIMITED WITH CLUBHOUSE CONSTRUCTION.**
- **PLAYER DINING** will be located in the ballroom on the East end of the clubhouse and will be open to Player Spouses/Significant Others with a TOUR issued credential that has “3” on it (hours listed above).
- **LOCKER ROOM/CLUB STORAGE** there are no locker room facilities and club storage is not available. All player products will be available for pick up at registration.
- **CHIROPRACTOR** is available onsite and is located near registration. Hours are: Monday from 12-5 pm; Tue 2-5 pm; Wed 1-2:30 pm; Thu 6 am-5 pm; Fri 1-2:30 pm; Sat and Sun 6 am-1 pm.
- **FITNESS CENTER** is available at Common Grounds Fitness Center located at 1071 Veterans Drive, Elkhorn, NE 68022 (hours listed above). Please show your tour issued credential when you arrive.
- **YARDAGE BOOKS** will be available free of charge at Player and Caddie Registration. Players and caddies must use a committee approved book. This includes the 2022, 2023 and 2024 versions of the Committee Approved book.
- **CADDIE PARKING** Caddie parking is in LOT O, the grass lot south of the clubhouse on the corner of Manderson and N 202<sup>nd</sup> St. A caddie credential will be required to gain access and will be distributed at registration.

Please identify yourself as a caddie prior to registering to gain access (Please see map below).

- **CADDIE DINING** and HQ will be located in the airconditioned tent adjacent to the temporary Indian Creek Pro Shop trailers. This will be a shared space with Tournament Volunteers. Please see hours listed above.
- **EQUIPMENT TRUCKS** are located behind and to the left of #10 green.
- **Dr. Julie Amato** will be holding virtual sessions this week. Click the link to sign up for a session.
  - <https://calendly.com/drjulieamato/dr-julie-virtual-kft-pinnacle>
- **CONCERT SERIES**
  - FRIDAY: [Buy Tickets Here](#)
  - SATURDAY: [Buy Tickets Here](#)
  - Discount code that works on both GA and VIP tickets: WHBLUE
- **Reshuffle** will occur after the Utah Championship. With Utah on TV (7pm MT/9pm ET Finish), the reorder will not show on-line until later that evening.

## **TOURNAMENT WEEK SCHEDULE**

### **Prior to Monday August 4<sup>th</sup>**

- Players will have access to the golf course and practice facilities on Sunday, August 3<sup>rd</sup>. Practice rounds on Sunday are on a space available basis and must be arranged by calling the Indian Creek Pro Shop at (402) 289-0900. The practice range is available until 4:00 pm using the club's regular range balls.

### **Monday, August 4<sup>th</sup>**

- Practice facilities will be open from 7:00 am – 7:30 pm.
- Sandhills Global Pro-Am: Tee times from approximately 12:00 pm - 2:30 pm off #1 & #10 tees.
- Practice rounds are available until the afternoon pro-am begins and are available after the last group in the pro-am has made the turn (approximately 5:30 pm).

### **Tuesday, August 5<sup>th</sup>**

- Practice facilities will be open from 6:00 am – 7:30 pm.
- Practice Rounds available from #1 and #10 tees.
- PGA HOPE Veterans Clinic on Driving Range from 4:00 pm. – 5:00 pm. Please note a portion of the range tee will be closed to practice for the clinic.
- Indian Creek Junior Pro-Am on Redfeather (not tournament nine) course from 5:30 p.m. -7:30 p.m.

### **Wednesday, August 6<sup>th</sup>**

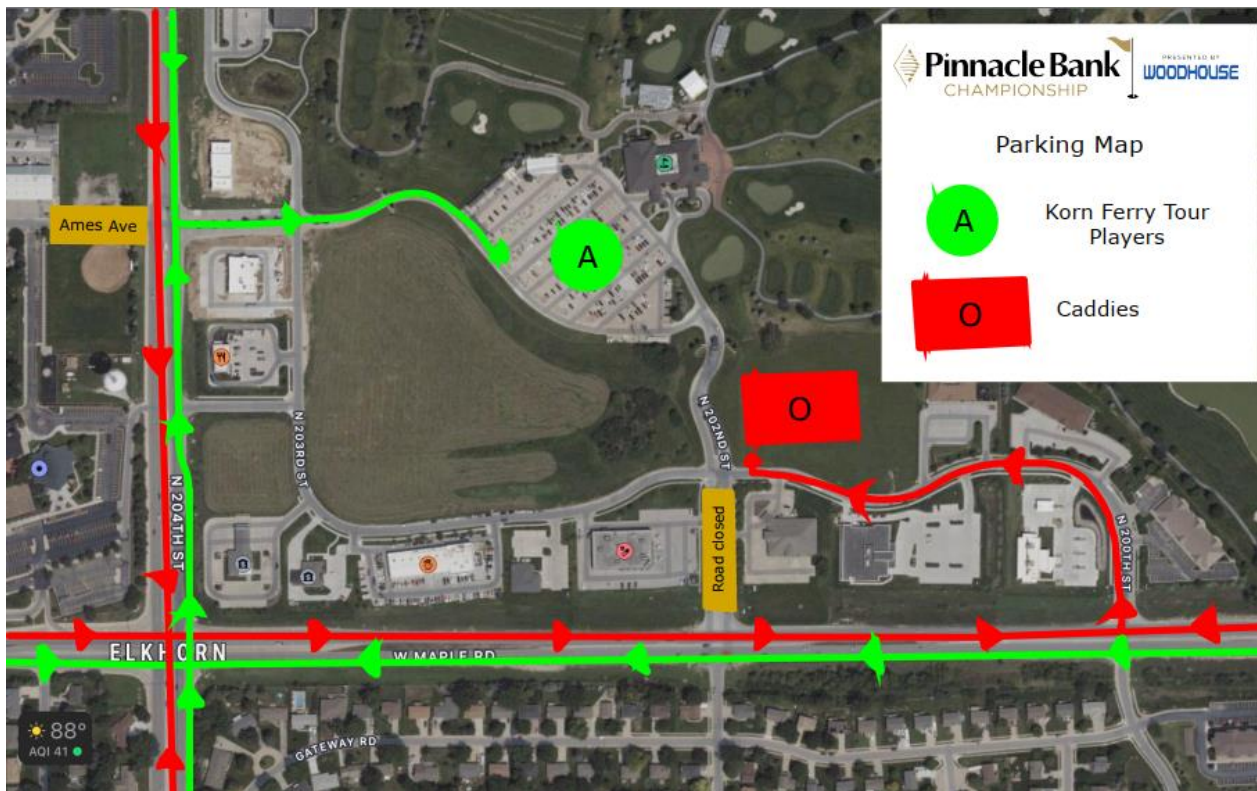
- Practice Facilities will be open from 5:15 am – 7:30 pm.
- The Range Tee is closed to professionals not in the pro-am from 6:00 am until 8:00 am and from 11:30 am until 2:00 pm
- Dormie Network Pro-Am:
  - 6:30 am – 8:42 pm off Holes 1 & 10
  - 12:10 pm – 2:22 pm off Holes 1 & 10
- **9-hole practice rounds will only be available prior to 6:15 am. There will be no practice rounds after the pro-am.**

- Practice Facilities will be open from 5:15 am – 8:00 pm.
- Round 1 tee times from approximately 6:45 am – 8:57 am and 12:10 pm – 2:22 pm.

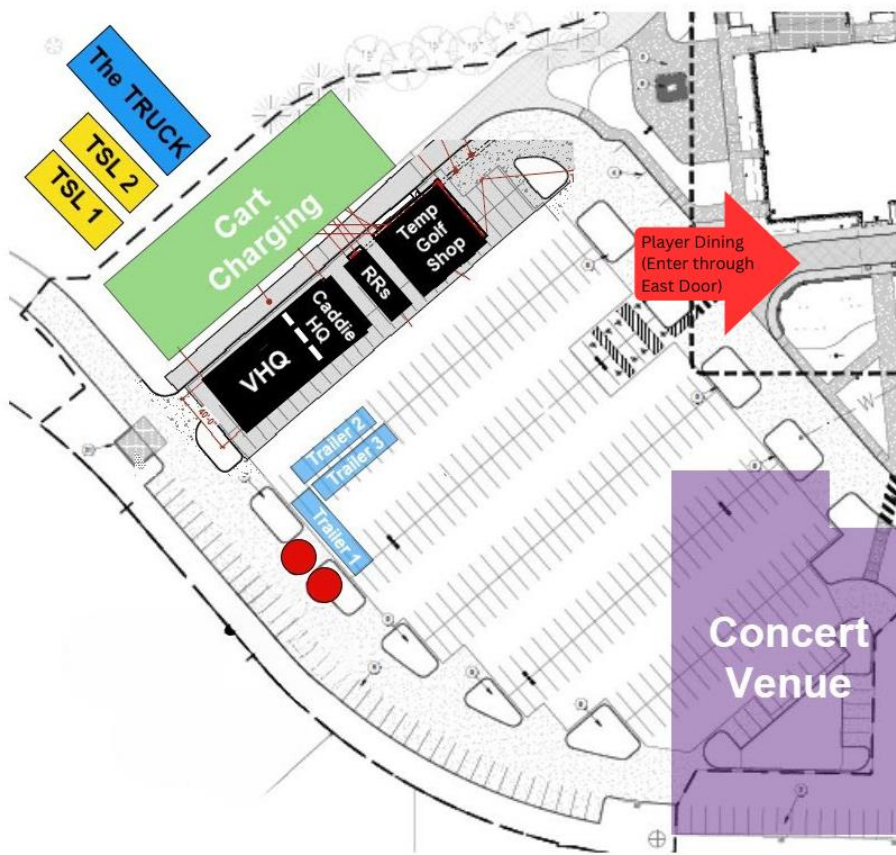
- Practice Facilities will be open from 5:15 am – 8:00 pm.
- Round 2 tee times from approximately 6:45 am – 8:57 am and 12:10 pm – 2:22 pm.
- Live & Loud Concert – Dylan Gossett with Max McNown
  - Doors Open at 6:00 pm / Concert begins at 7:30 pm

- Practice Facilities will be open from 5:30 am –7:00 pm.
- Round 3 tee times TBD. Approximately 5:00 pm local finish.
- RSM Putting Challenge 10:00 am on Redfeather practice green.
- Nebraska Section PGA Junior Championship with tee times approximately 2:00-4:00 p.m. on Redfeather course. Will utilize a portion of the range tee from 1:00 p.m. – 4:00 p.m.
- Live & Loud Concert – Shane Smith & The Saints with Jackson Dean
  - Doors Open at 6:00 pm / Concert begins at 7:00 pm

- Practice Facilities will be open from 5:30 am until one hour after the last tee time.
- Round 4 tee times TBD. Approximately 5:00 p.m. local finish.







**Floor Plan**  
Main Level

